

CERTIFIED LAND CORNER RECORDATION

DESCRIPTION OF CORNER EVIDENCE FOUND, AND ORIGINAL RECORD (If known)

LOCATION

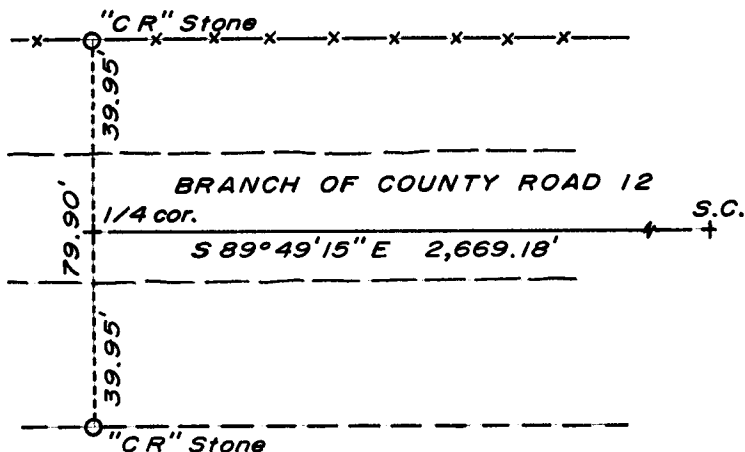
$\frac{1}{4}$ S.28
 $\frac{1}{4}$ S.33
 T.15N., R.67W.
 6th P.M.

Found "C R" stones, in place, as shown by sketch. Stones set by C.E. Gattis in 1935 as described in County Surveyor's Field Book 44, pages 33-34.

DESCRIPTION OF MONUMENT AND ACCESSORIES ESTABLISHED TO PERPETUATE THE ORIGINAL LOCATION OF THIS CORNER:

At the corner: No monument set.
 Accessories: None set.

SKETCH, WITH COURSE AND DISTANCE TO ADJACENT CORNER IF DETERMINED IN THIS SURVEY.
 (May Sketch or Paste Reproduction on Reverse Side.)



Basis of Bearing - By solar observation.

I, R.L. Hudson certify that I have carefully performed or reviewed the work done on the diagrammed corner as reported on this recordation form and approve the same.

R.L. Hudson Wyoming L.S. No. 519
 Signature of Surveyor Registration No.

STATE OF WYOMING,
 Office of Clerk and Recorder,
 County of Sarassee

This "corner record" was filed for record on the 24 day of June, 1974, was noted on the cross-index plat and is assigned page No. _____, in book No. _____.

John B. Huismann
 County Official

Cross Index No. <u>V11</u>	T. <u>15</u>	R. <u>67</u>	<u>6</u> Mer.
_____	T. _____	R. _____	Mer.
_____	T. _____	R. _____	Mer.
_____	T. _____	R. _____	Mer.
_____	T. _____	R. _____	Mer.
_____	T. _____	R. _____	Mer.
_____	T. _____	R. _____	Mer.

327599

Photographed

Indexed

Posted

Assessor

The State of Wyoming }
County of Laramie } SS

This instrument was filed for record
at 1453 o'clock A M. on the
24 day of June
A. D. 19 24 and duly recorded in
Book on page

John B. Williams

County Clerk & Ex-Officio Register of Deeds
By JB Deputy